

3 Major Bilateral Body Plans

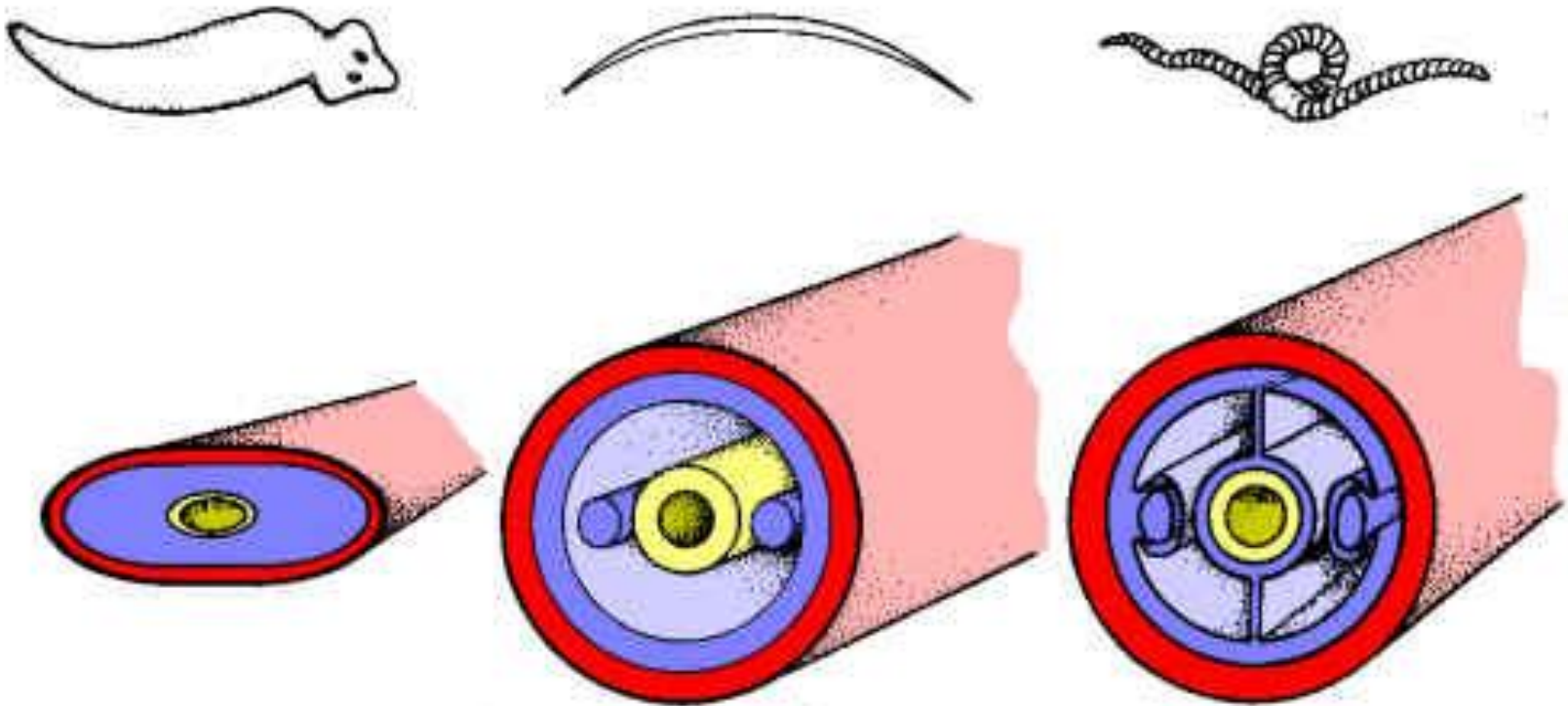
1. Acoelomates
 2. Pseudocoelomates
 3. Coelomates
- Each plan consists of **3 cell layers**: **endoderm**, **mesoderm**, **ectoderm**



Several crustaceans show up at the classification party with the same body plan

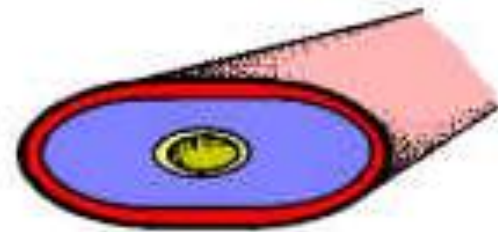
Body Cavities

- http://www.youtube.com/watch?v=AJ_qZ6ld6A0



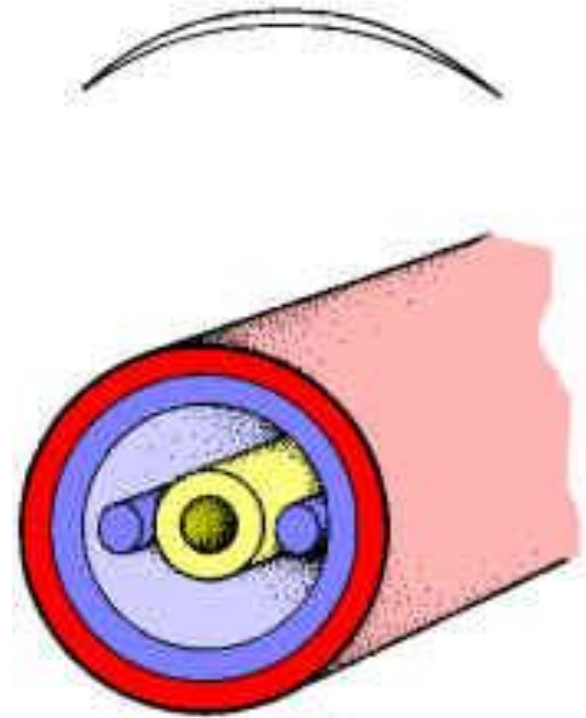
Acoelomates

- These animals have no other cavity than the gut.
- They are often called the “solid worms.”



Pseudocoelomates

- These animals have a body cavity (the pseudocoelom) which is **not completely lined** with mesoderm.
- The “**tube within a tube**” body plan.
- This category is also **composed** of mostly **worms**.



Coelomates

- These animals have a “true coelom” lined with mesodermal peritoneum.
- Most animals are coelomate.

