

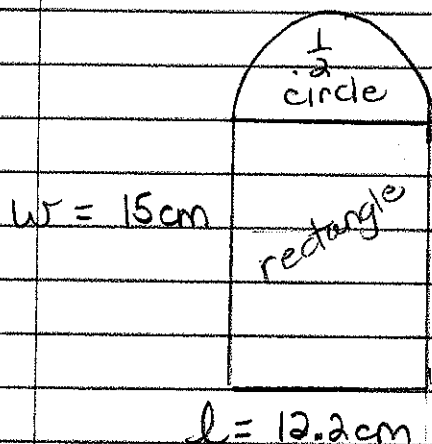
Math 8 p. 231
q. # 1, 3, 6, 8, 11

Tues, Apr. 24, 2018

Composite Shapes

- is a shape made out of 2 or more shapes

SHAPES : triangle, square, parallelogram, rectangle, rhombus, trapezoid, circle, pentagon, hexagon, octagon



$$A_{\text{circle}} = \frac{\pi r^2}{2} = \frac{\pi (6.1)^2}{2}$$

$$A_{\text{circle}} = 58.45\text{cm}^2$$

$$A_{\text{rectangle}} = l \times w$$
$$= 12.2\text{cm} \times 15\text{cm}$$
$$= 183\text{cm}^2$$

$$A_{\text{total}} = A_{\text{circle}} + A_{\text{rectangle}}$$

$$= 58.45\text{cm}^2 + 183\text{cm}^2$$

$$A_{\text{total}} = 241.45\text{cm}^2$$

Perimeter \rightarrow

Circle $P_{\text{circle}} = \frac{\pi d}{2}$

$$P_{\text{circle}} = \frac{\pi (12.2\text{cm})}{2}$$

$$P_{\text{circle}} = 19.16\text{cm}$$

Rectangle $P_{\text{rect.}} = 2(l) + 2(w)$

$$P_{\text{rect.}} = 2(12.2\text{cm}) + 2(15\text{cm})$$

$$P_{\text{rect.}} = 24.4\text{cm} + 30\text{cm}$$

$$P_{\text{rect.}} = 54.4\text{cm} - \underline{12.2\text{cm}}$$

(Think - Error in calculating we added inside length so subtract it)

$$P_{\text{rect.}} = 42.2\text{cm}$$

$$P_{\text{total}} = P_{\text{circle}} + P_{\text{rect.}}$$

$$P_{\text{total}} = 19.16\text{cm} + 42.2\text{cm}$$

$$P_{\text{total}} = 61.36\text{cm}$$