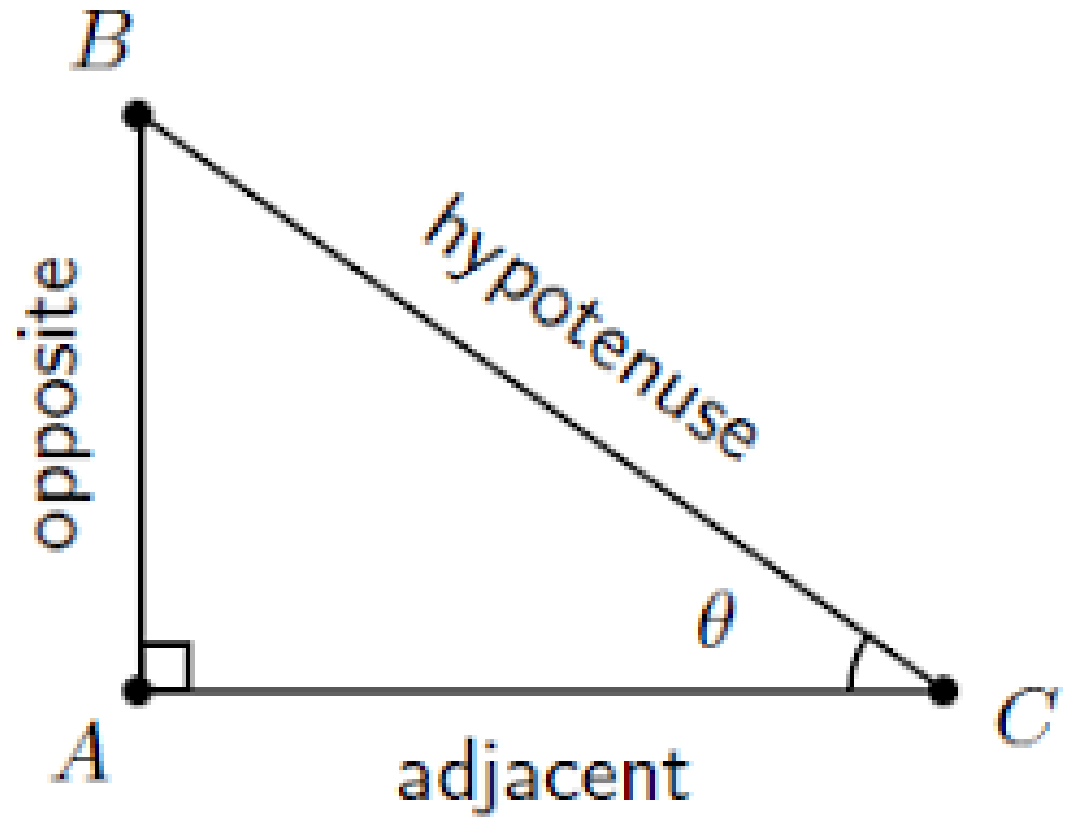
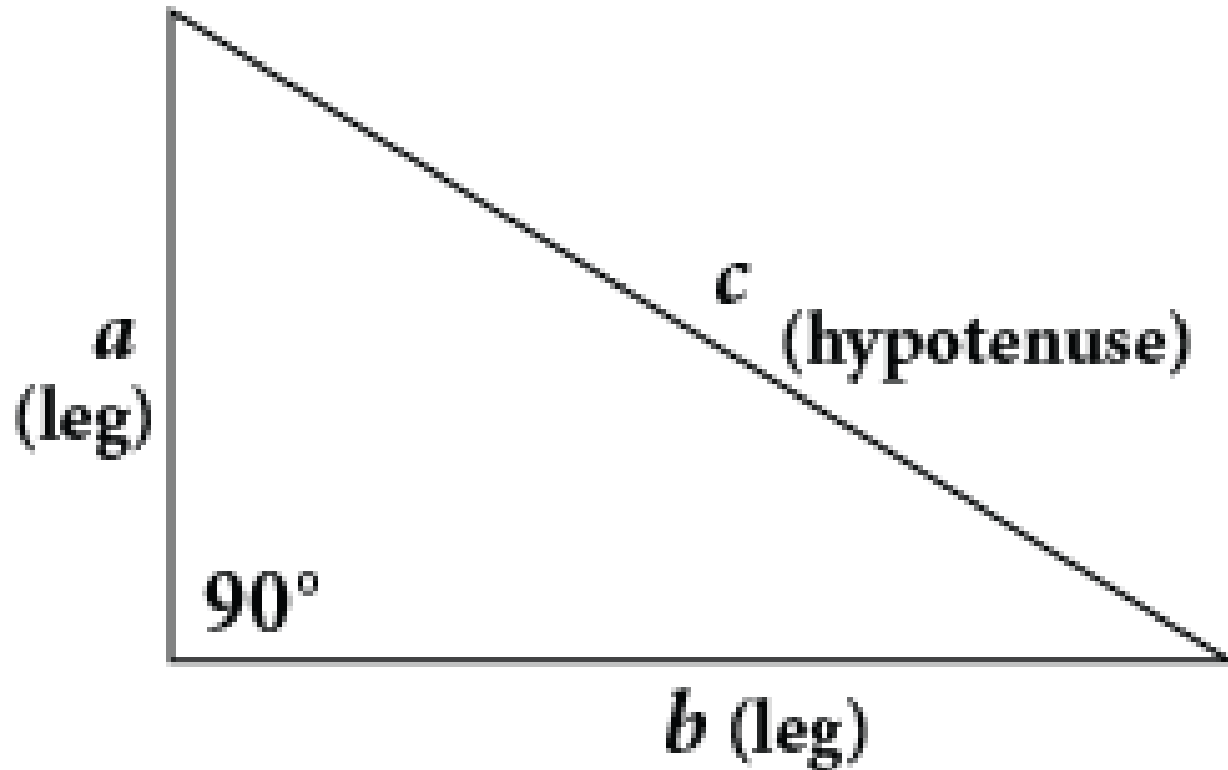
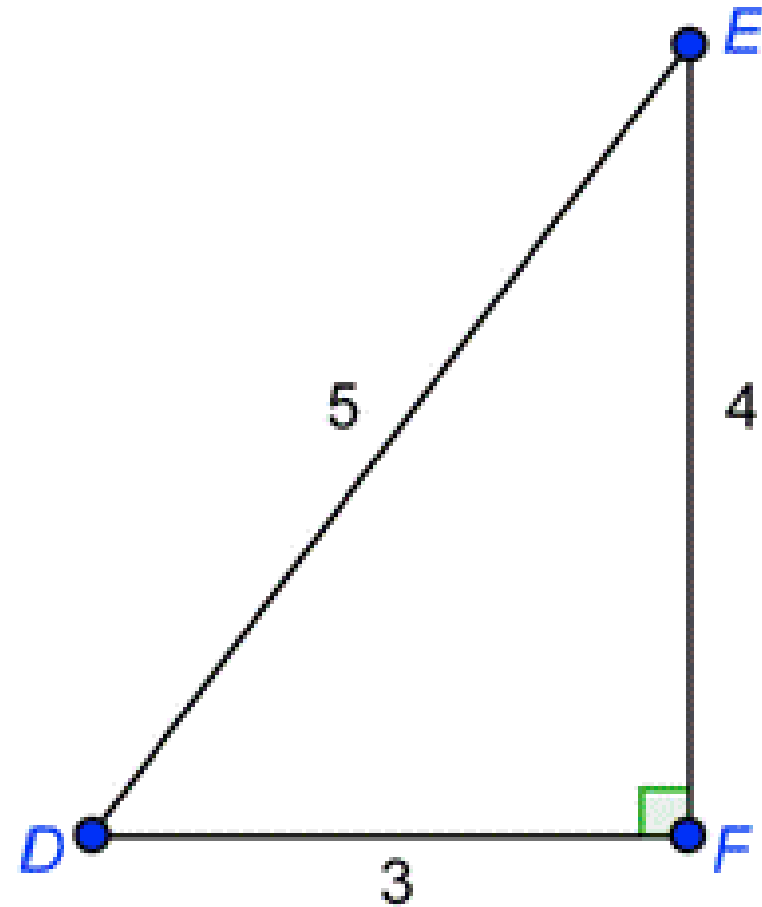
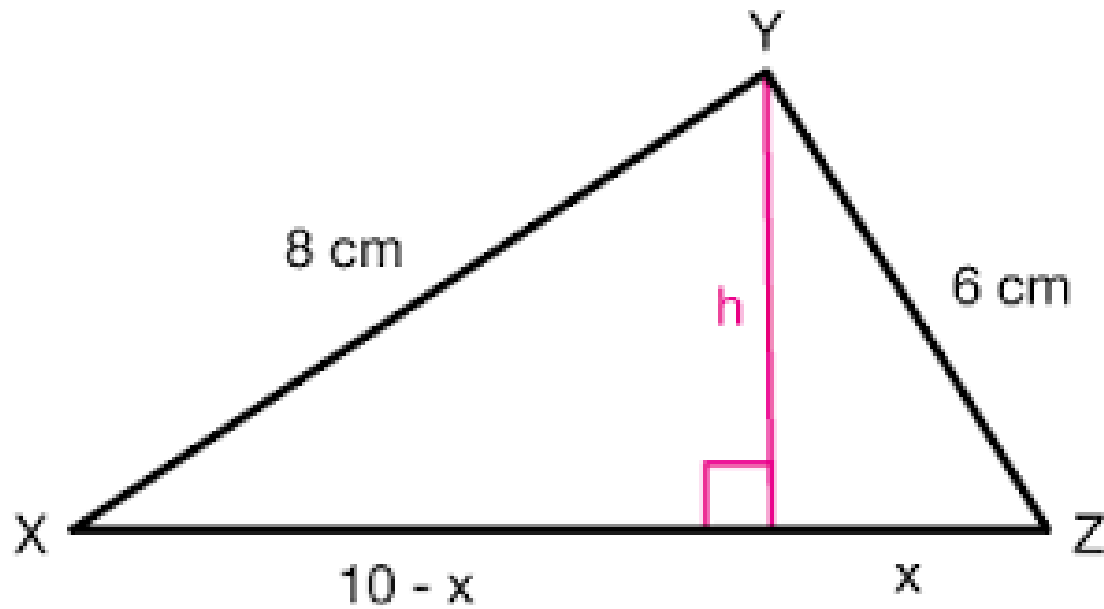


Pythagoras Continued

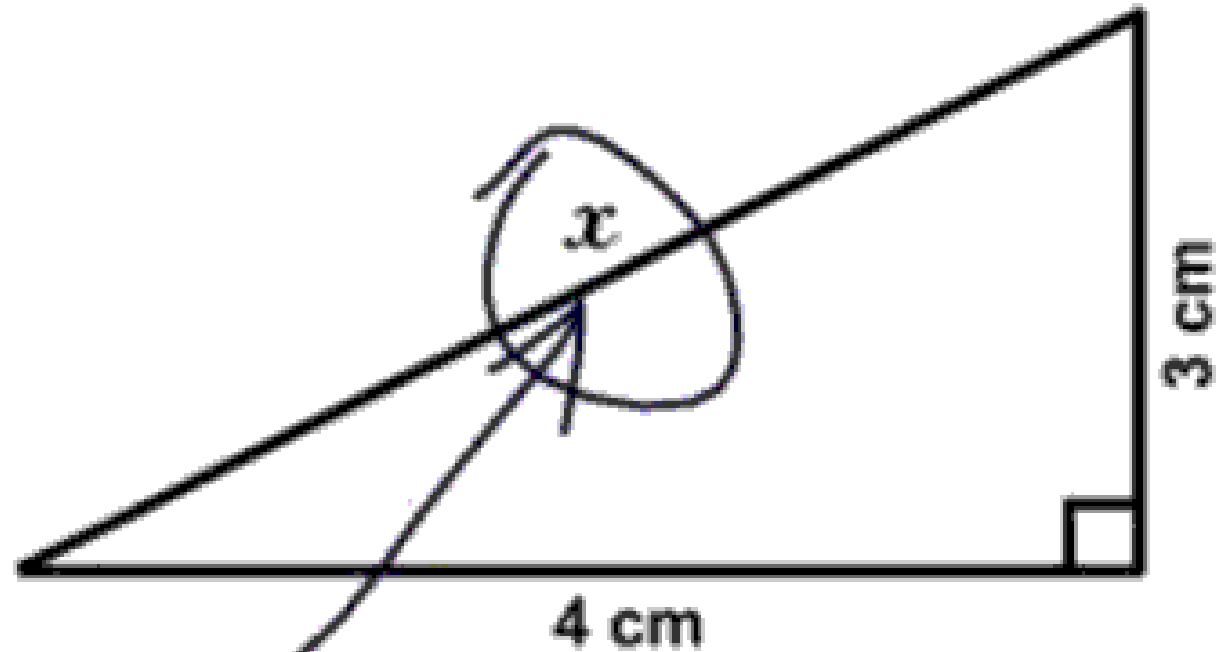
How do we label right triangles: Most right triangles are labeled with A, B and C



So we know most right triangles are labeled A, B, C, but is this always the case?



Find x .



Here it is

Right Triangles are seen all over the world

- Therefore understanding Pythagoras is not just limited to triangles drawn on a page but to triangles found in the real world.

Assignment:

- Inquiry: Page 208 # 1 to 6
- Page 209 # 1 to 12