

Phylum Annelida

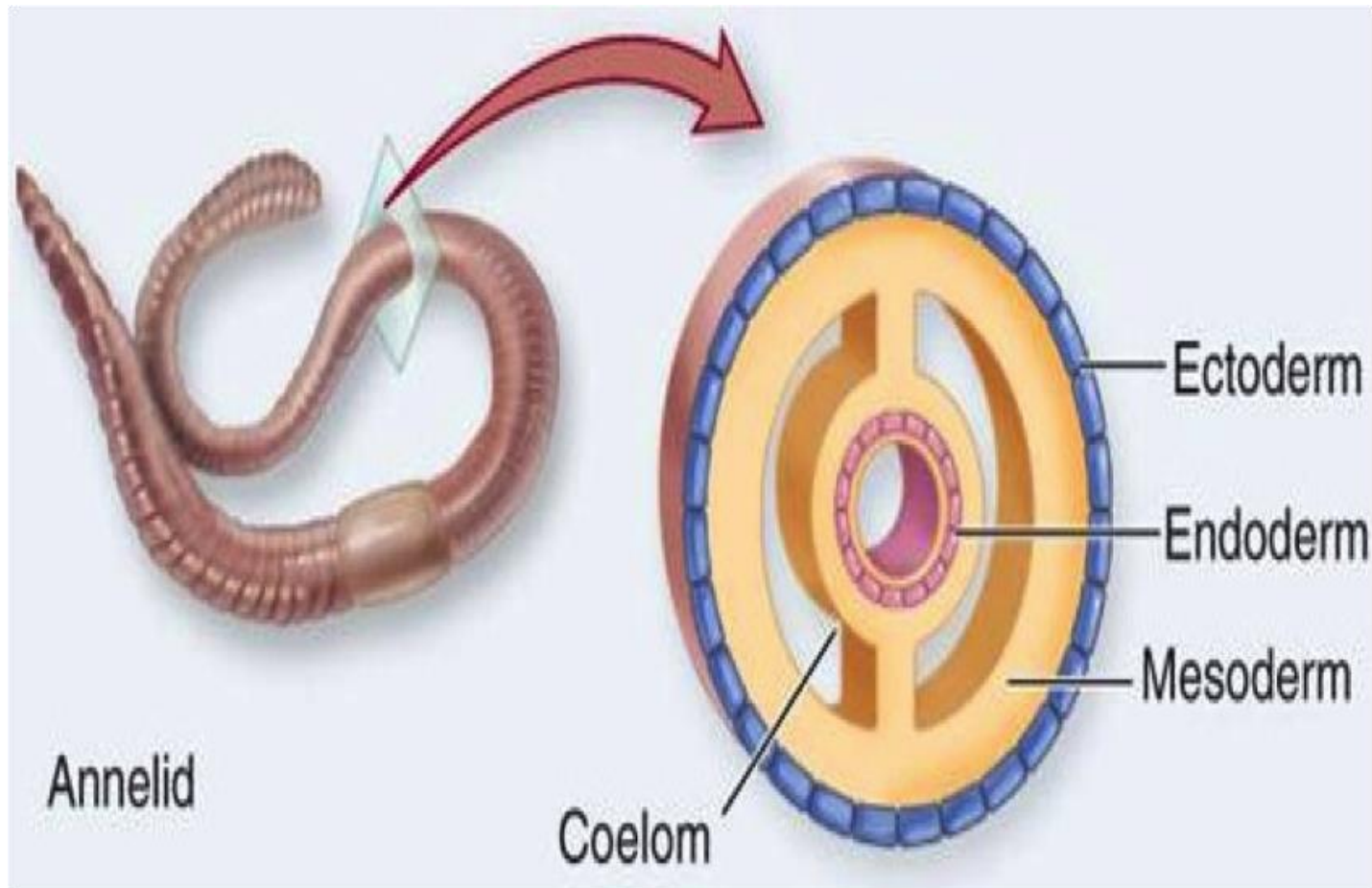
(segmented worms)



Main Characteristics

segments

true coelom (body cavity)



Annelids

Include:

earthworms

marine worms

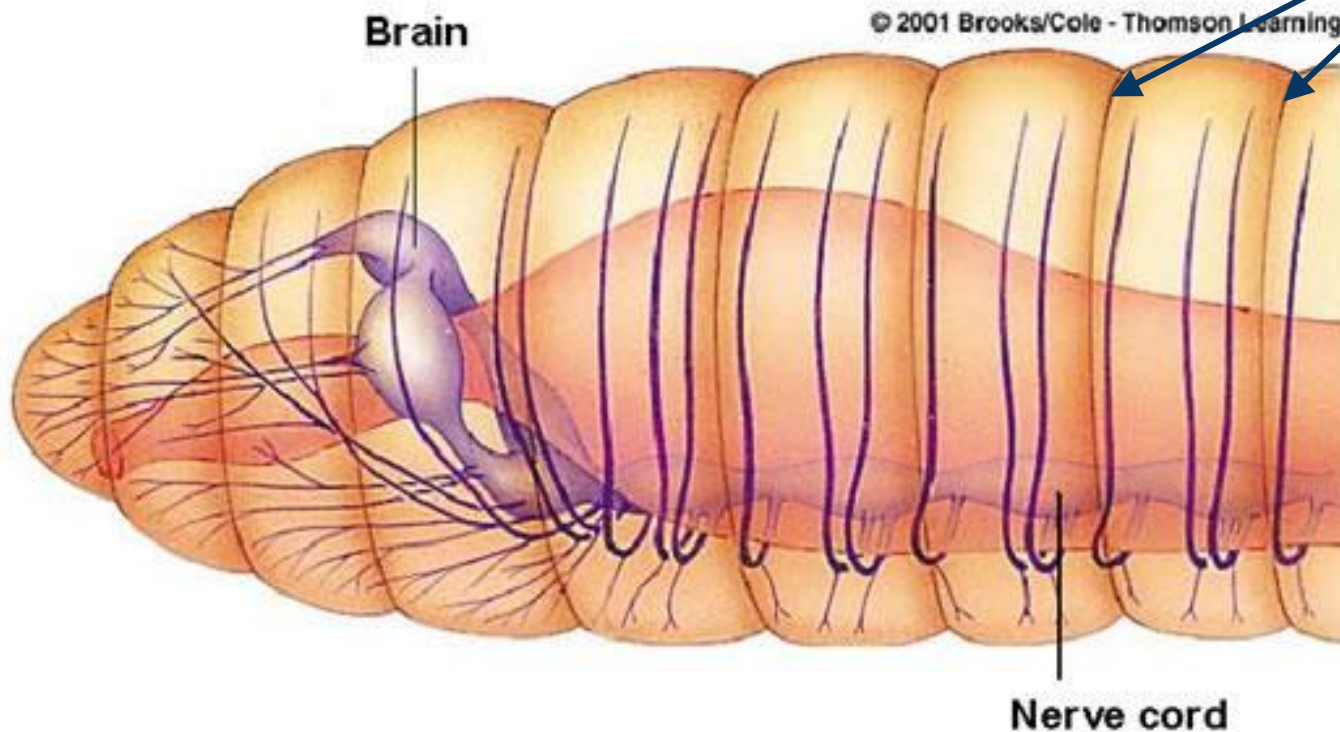
leeches



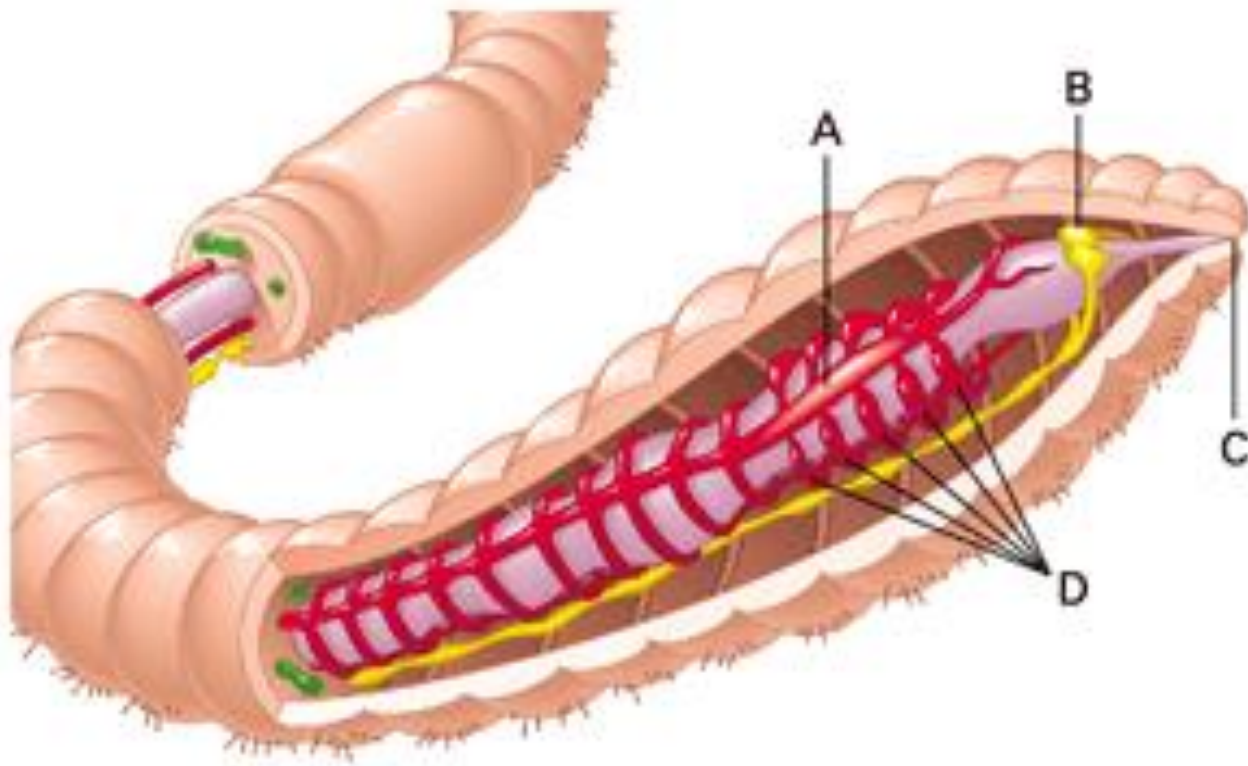
This is a scale worm (Polychaetes). They live 1000 meters below the water's surface and can turn their mouths inside out.

Other Traits

- Annelida means “little rings”
- body segments separated by **septum**
= internal **wall**



- some have bristles called setae
- have closed circulatory system
- have well-developed nervous system (brain)

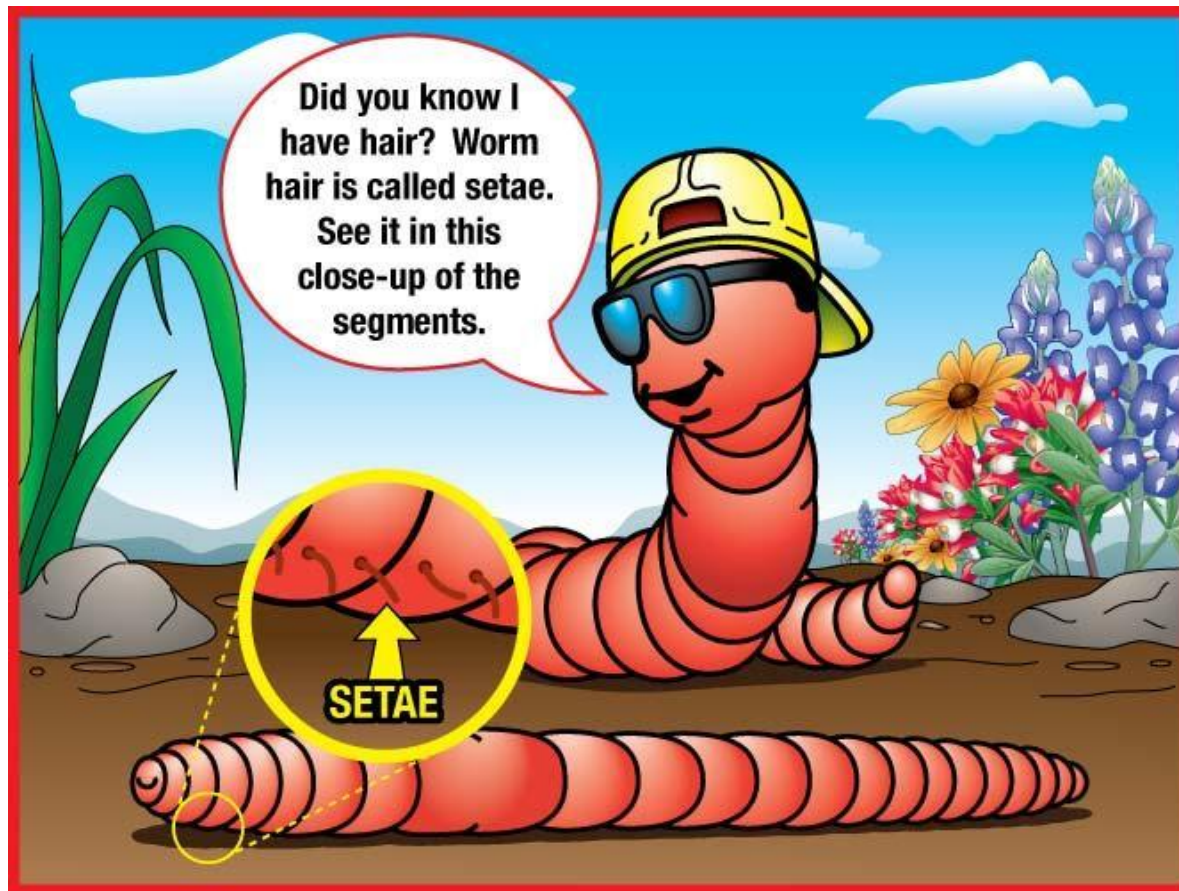


- **sexual reproduction** in annelids
- **some** are **hermaphrodites**



Class Oligochaeta – Earthworm

- Few setae
- Live in soil or fresh water
- Castings - enrich soil, (worm poop)







Class Hirudinea

-Leeches

-external parasites with suckers on each end

-medicinal uses
(circulation,
anti-clotting)







Leeches being bred for medical uses.

What would you do to cure a swollen foot?



Class Polychaeta

Marine worms

-includes:

sandworms,

bloodworms,

fireworms

-have paddle-like

appendages with

setae



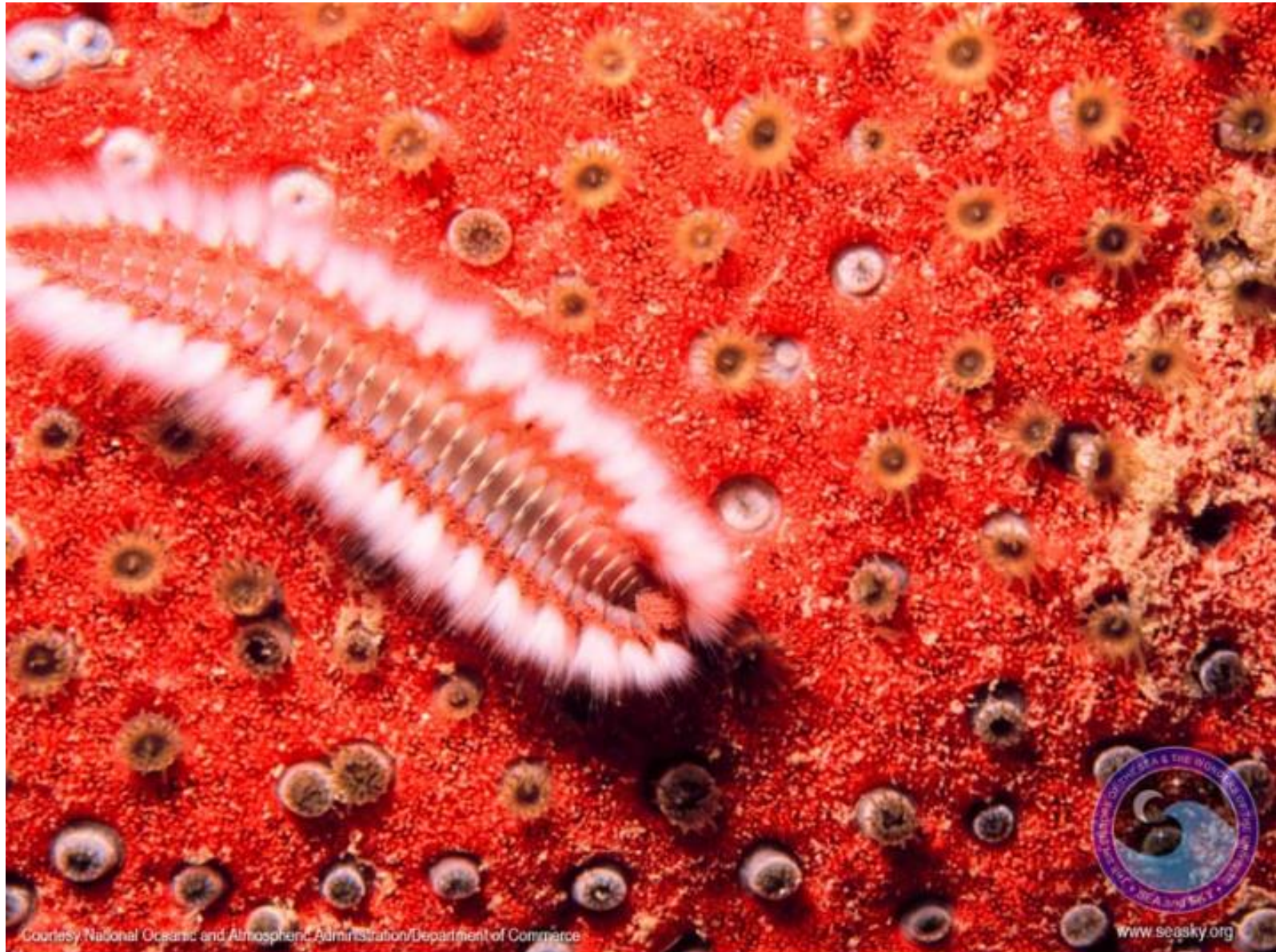
Nereis



Featherduster



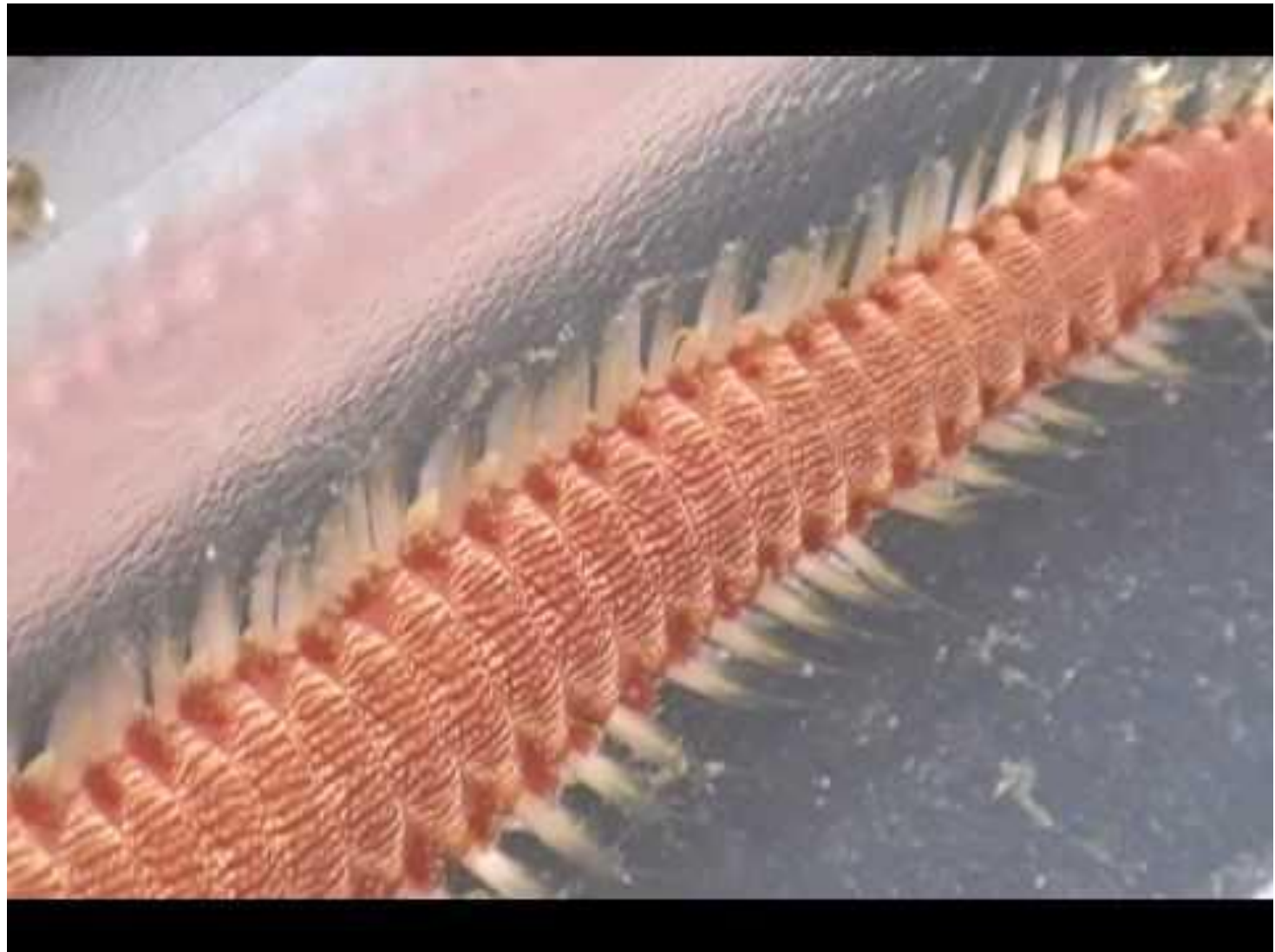
Fireworm



Courtesy National Oceanic and Atmospheric Administration/Department of Commerce



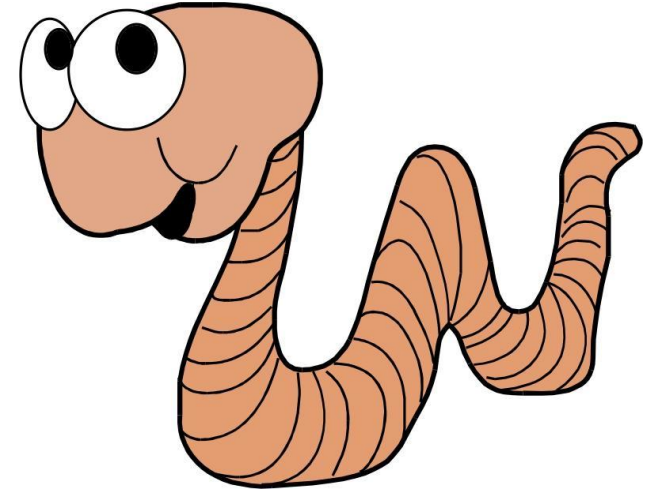
www.seasky.org



Recap: Taxonomy

Kingdom Animalia

Phylum Annelida



Class **Oligochaeta** (earthworms)

Class **Hirudinea** (leeches)

Class **Polychaeta** (marine worms)

*All are **segmented**, and have a **coelom**